



# HPL

COLLECTION

FEEL THE  
REALISTIC  
FORM  
OF NATURE!



## Maa Panel (India) Pvt. Ltd.

Sr. No. 420 At & Po: Amodara(Rampura), Opp. BRS Collage, Salal - Rampura Road, Prantij, Sabarkantha - 383210 (Guj.).

Contact : +91 70435 55286

info@maplalupanel.com



Visit us at:  
[www.maplacp.com](http://www.maplacp.com)



<https://twitter.com/maplacppanel>



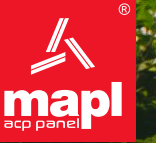
<https://www.facebook.com/maplacppanel>

www.ideationdesign.in





# TIMELESS BEAUTY AND EXPERTISE OF ART TOGETHER



## MAPL COLLECTION

### OVERVIEW

MAPL asks for more! Manufacturing the product and selling it isn't enough. We need more than that. That 'more' is the magic – Quality and Commitment. It really needs to be strengthened at core level. That's one of the reasons why MAPL is a strong organization.

MAPL, after enjoying success with Aluminium Extrusion, Maa Panel (India) Pvt. Ltd. is now exploring new avenues by creating an exclusive range in the Aluminium Composite Panel industry as well. M/s Maa Panel (India) PVT. LTD. is one of the leading manufacturers of Aluminium composite panels (ACP) in India. with the state-of-art plant at Sabarkhantha in Gujarat under the brand 'MAPL'. MAPL is also accredited with ISO 9001-2015 & ISO 14001:2004 certification and certified by India's most reputed testing institutions.

Our manufacturing facilities feature a perfect ergonomic design and industrial output by team of proficient men aided by world class machines.





## APPLICATION

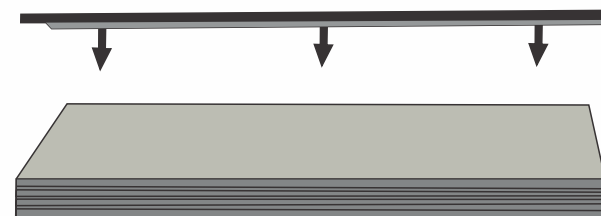
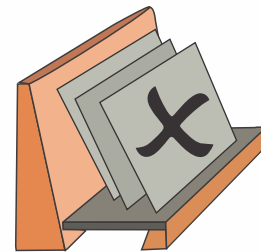
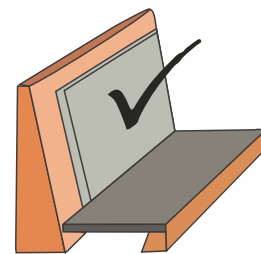
- Wall Cladding
- Balcony Cladding
- Attic Cladding
- Outdoor Cladding
- Gate Elevation
- Rafters
- Railing
- Ceiling
- Pergola
- Fences
- Louvers
- Canopy

## HAULING, HANDLING & STORAGE

To ensure there is no damage to the edges or surface of the high-end material (MAPL HPL), please handle them with extreme care. During the process of transporting the panels, they should be protected well against slipping. Make sure that the panels are lifted securely while handling or unloading them. Kindly avoid pushing or pulling them over the edge.

It's important to remove the protective film within 45 day of installation.

The panels must be stocked parallel to the ground on flat and stable supporting panels. They should be in completely flat position. Erroneously storing the panels can lead to permanent damage or deformation.



## DIMENSIONS

|                     |         |
|---------------------|---------|
| Standard Sheet Size | 4' x 8' |
| Thickness           | 6mm     |

\* Customized length can be provided on special request

## FEATURES

- Green Product
- Water & Fungus Proof
- Aluminium Based HPL
- CNC Cutting Possible
- Light Weight
- Weather Resistant
- UV Resistant
- Easy to Clean
- Lumiflon Coating
- Termite Resistant
- Easy to Install
- Wide Range of Colours & Designs





# 100% MAINTENANCE FREE & WATER PROOF

## A NEW EXTERIOR STORY - NATURE REDEFINED

Since time immemorial we have been using traditional wood as one of the prime sources of decoration and embellishment in our homes. Our living spaces have always looked incomplete without wood; their exquisite nature and their utility adding a special layer of appeal. The benefits were many, but traditional wood still lagged behind in mainly three facets: firstly, it was not available in copious quantity, a prerequisite for large-scale projects, secondly, it is subjected to a lot of weather extremities, resulting in a shortened lifespan; thirdly, its maintenance takes a lot of money and efforts.

Keeping all of these aspects in mind, MAPL brings to you MAPL HPL, an advanced range of aluminium-based high-pressure laminates. In many ways, the durability and elegance of MAPL HPL far supersedes traditional wood. Unlike wood and other widely used high-pressure laminates available in the market, the MAPL HPL panels are tough and sturdy.

They are highly resistant to extreme weather as well as harsh, long-lasting climatic conditions. MAPL HPL is crafted in a state-of-the-art facility under stringent conditions, by using aluminium coils with double-layered Lumiflon coating (highly resistant to dust and dirt). The polyethylene core makes MAPL HPL resistant to the adverse effects of fungus, termites and water.

And that's not it, the MAPL HPL range is available in a host of textures, dimension and hues, with the option to customize the colours and dimensions according to one's satisfaction. The prices are reasonable, yet the quality is not compromised. MAPL brand has, in a way, redefined the notion of premium facades and exteriors. MAPL, with its dynamic marketing and sales network across India and beyond, offers services that are par excellence.

Today, be it a mansion, a high-rise, a corporate building, an educational institute or a commercial complex, MAPL HPL is the preferred material for the exterior cladding needs of many.

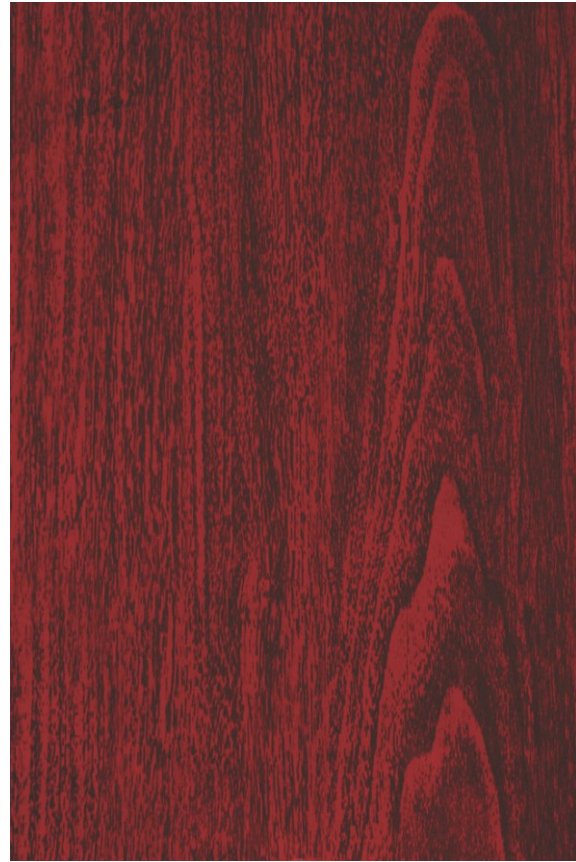
## TECHNICAL SPECIFICATIONS

| Technical Specifications Of MAPL        |   |                          |
|---|---|--------------------------|
| S.No                                    | ITEMS                                       | MAPL HPL                 |
| 1                                       | Thickness of composite panel (mm)           | 6mm                      |
| 2                                       | Skin Thickness (mm)                         | 0.25mm                   |
| 3                                       | Weight (Kg/Sqm)                             | 7.5g                     |
| 4                                       | Polyethylene type LDPE (g/cm <sup>3</sup> ) | 0.92                     |
| 5                                       | Surface                                     | -----                    |
| 6                                       | Lacquering                                  | LUMIFLON/PVDF            |
| 7                                       | Brilliance (Initial Value)                  | 30-30% accord to Gardner |
| 8                                       | Hardness (Pencil Hardness)                  | H                        |
| 9                                       | Temperature resistance                      | from -50°C to +80°C      |
| 10                                      | UV stability                                | Brilliant                |
| Mechanical Properties of ACM            |   |                          |
| S.No                                    | ITEMS                                       | MAPL HPL                 |
| 11                                      | Tensile Strength (ASTM E-8)                 | 3.2 Kgmp2                |
| 12                                      | Yield Strength (ASTM E-8)                   | 4 Kg/mm2                 |
| 13                                      | Elongation (ASTM E-8)                       | 13%                      |
| 14                                      | Flexural Elasticity (ASTM C-393)            | 4030/MM2                 |
| 15                                      | Thermal Expansion (ASTM D-698)              | 1.1 mm/M/50.0            |
| Mechanical Properties of Aluminium Skin |   |                          |
| S.No                                    | ITEMS                                       | MAPL HPL                 |
| 16                                      | Aluminium Alloy Grade                       | H 18 - 1 100             |
| 17                                      | Yield Strength                              | 14 Kg/mm2                |
| 18                                      | Modules of Elasticity (ASTM C-393)          | 7000 Kg/mm2              |
| 19                                      | Bond Integrity (ASTM C-297)                 | 118 Kg/cm2               |
| 20                                      | Deflection Temperature (ASTM D-698)         | 110°C                    |
| Accoustical Properties                  |   |                          |
| S.No                                    | ITEMS                                       | MAPL HPL                 |
| 21                                      | Sound Absorption Factor as                  | 0.05                     |
| 22                                      | Airborn sound insulation index Rw (dB)      | 24                       |
| 23                                      | Loss Factor D                               | 0.0057                   |

| General Properties                      |  |  |
|---|--|--|
| S.No                                    | ITEMS  | MAPL HPL   |
| 24                                      | Gloss at 600                                   | 26   |
| 25                                      | Elongation ASTM E-8                            | A50>=3%  |
| 26                                      | Abrasion Resistance (ASTM - D- 968-81)         | The painted film doesn't wear out through pouring 50 litre of sand on the surface of the coated panel. |
| 27                                      | Hardness (Pencil hardness)                     | 3H   |
| 28                                      | Film Hardness (Pencil hardness)                | 2H   |
| 29                                      | Rigidity E-J (KN cm 2/3)                       | B65  |
| 30                                      | Reverse Impact Crosshatch ASTM01737-62         | 2T1 No Cracking  |
| ADHESION                                |  |  |
| S.No                                    | ITEMS  | MAPL HPL   |
| 31                                      | Dry ASTM D-3359 Method 8                       | No Change  |
| 32                                      | Wet 37.80C, 24 Hrs                             | No Change  |
| 33                                      | Boiling Water 1000C, 20mm                      | No Change  |
| Mechanical Properties of Aluminium Skin |  |  |
| S.No                                    | ITEMS  | MAPL HPL   |
| 34                                      | HCL (ASTM D 1 309                              | No Change  |
| 35                                      | H2 So4 (ASTM DI 308-79)                        | No Change  |
| 36                                      | Detergent (ASTM D2248-73)                      | No Change  |
| 37                                      | Oil Resistance                                 | No Change  |
| 38                                      | Dirt Resistance                                | No Change  |
| WEATHER ABILITY                         |  |  |
| S.No                                    | ITEMS  | MAPL HPL   |
| 39                                      | Colour Retention ( ASTM D-2244-89 Max 5 Units) | 4000 Hrs   |
| 40                                      | Gloss Retention ASTM D-523-89 70%              | 4000Hrs  |
| 41                                      | Chalking ASTM D-4214-89 Max 8 Units            | No Chalking was Seen 4000Hrs   |
| 42                                      | Salt Spray                                     | No Change 3000Hrs  |
| 43                                      | Humidity ASTM D-2247-87                        | No Blister, No Cracking 10 Cycles:24 Hrs X 100% RH, 37.80C:2 Hrs X 180C                                |
| 44                                      | Humidity (Thermal ASTM D-2244-65               | None to very few it blisters 100%  |
| 45                                      | Condensing Humidity 54.40C ASTM 4585-87        | Rhx 54.40C, 2500 Hrs   |



# HPL COLLECTION



HPL - 308 MAHOGANY RED



HPL - 309 EBONY

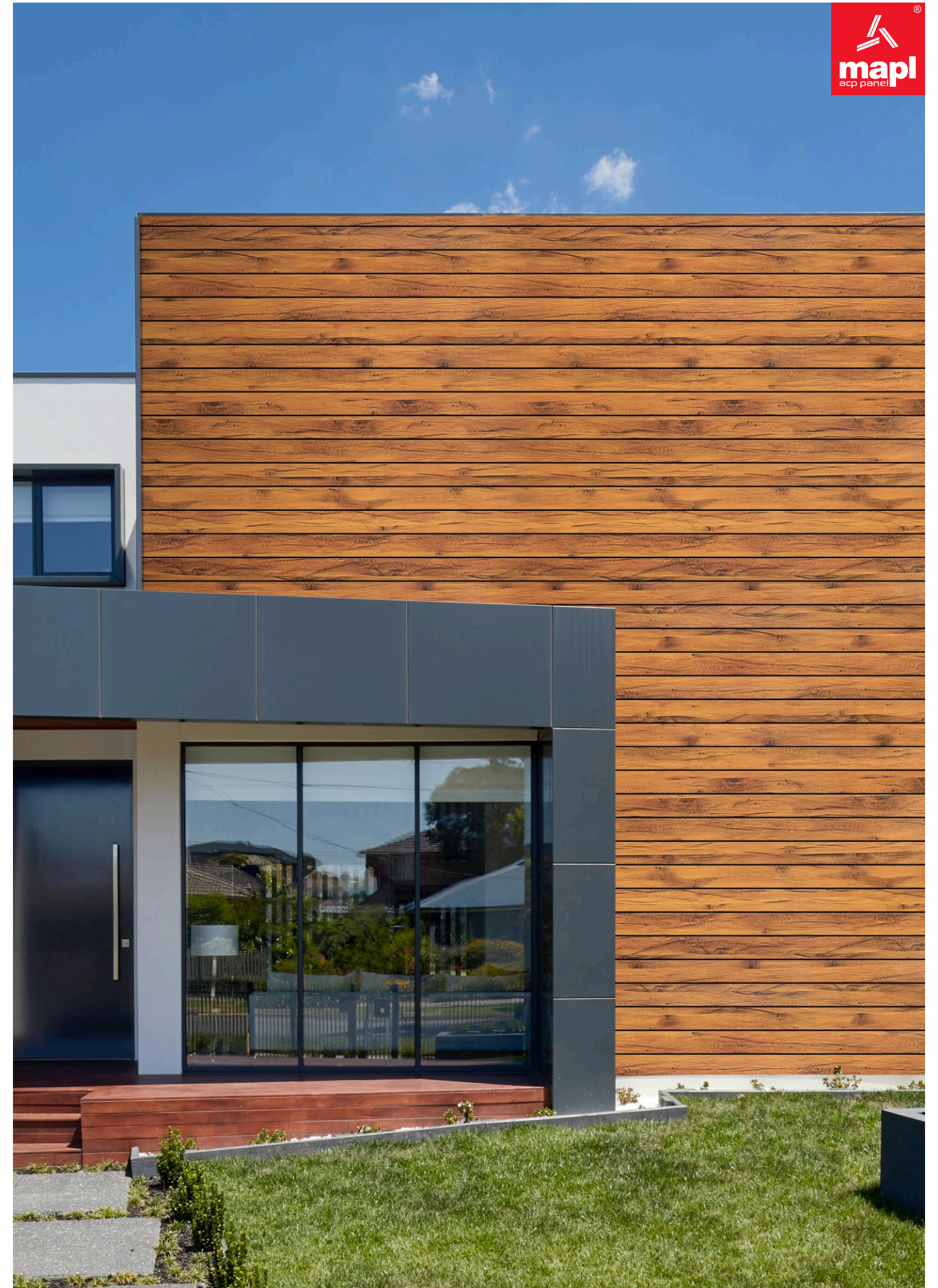


HPL - 316 CHIFFON



HPL - 318 ATLANTIA OAK

BEAUTIFUL FROM OUTSIDE,  
TOUGH FROM INSIDE



Product Shown : HPL - 316 CHIFFON



# HPL COLLECTION



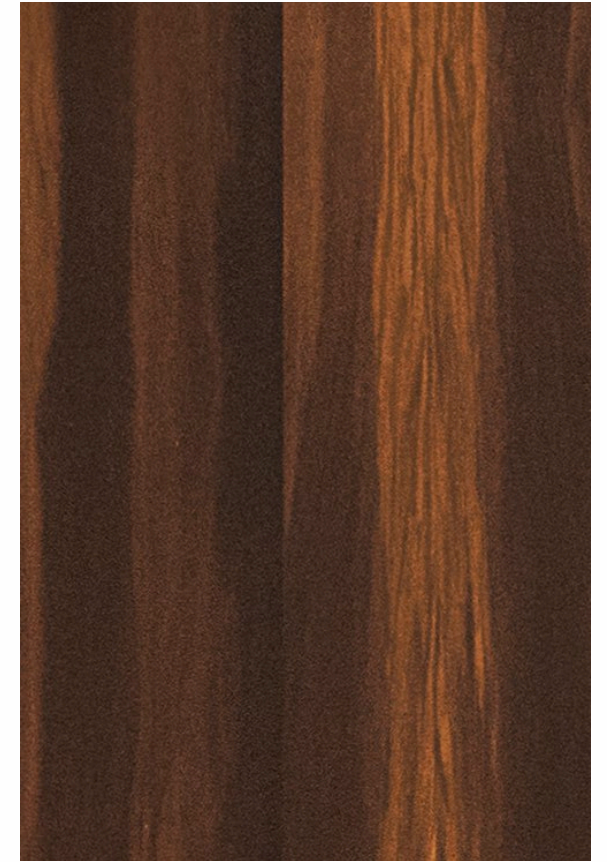
HPL - 401 PERGO WENGE



HPL - 402 MORBIAN OCRE



HPL - 405 TRUE WOOD



HPL - 406 DUPLEX CHERRY



HPL - 403 FORESTE DARK



HPL - 404 LAM BURNE



HPL - 407 SCOTTWOOD



HPL - 408 WOODSTYLE BROWN

PERFECT ACP FOR YOUR  
PERFECT EXTERIOR



# HPL COLLECTION



HPL - 409 MAGIC WENGE



HPL - 410 CANADIAN CHERRY



HPL - 413 DARKENED WOODGRAIN



HPL - 414 DECOTA BROWN

DESIGNS AND TEXTURES THAT  
DEFINE PERFECTION

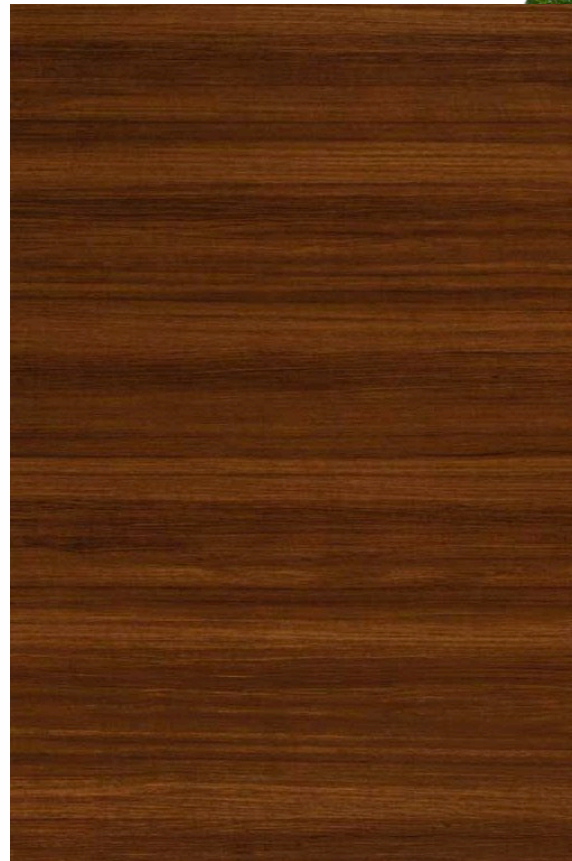


Product Shown : HPL - 410 CANADIAN CHERRY





HPL - 416 NATURAL RAINWOOD



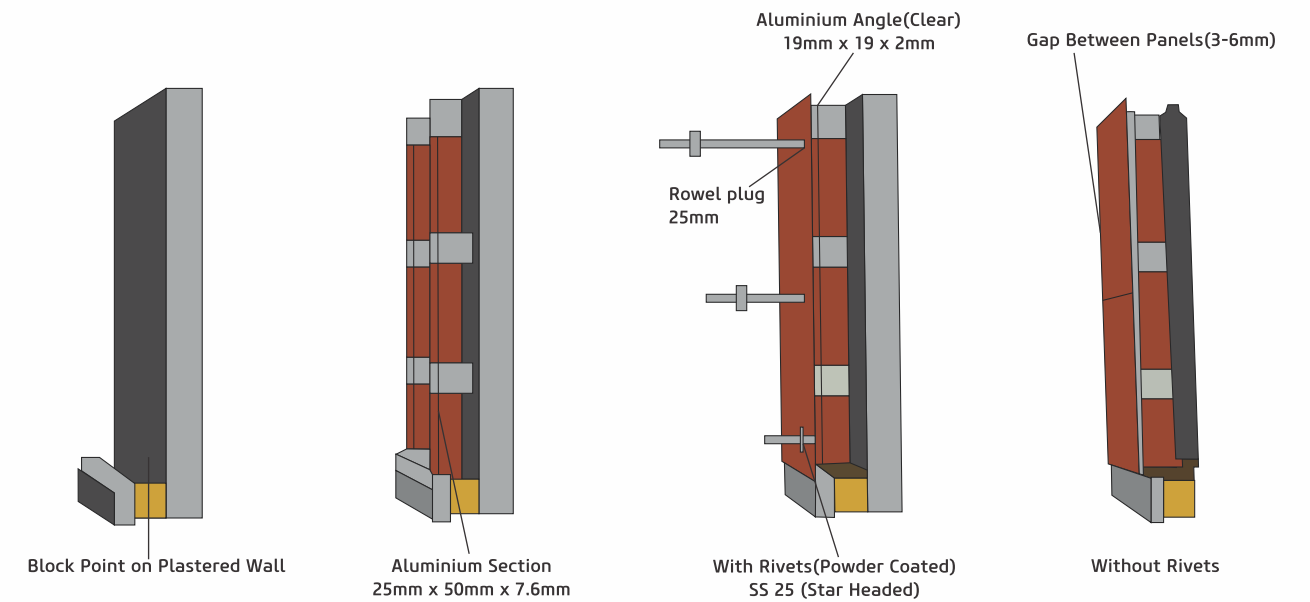
HPL - 417 BURMA TEAK



HPL - 425 ROYAL CREMA



## FIXING METHOD



| Thickness of Sheet | Minimum Distance of Holes to the Edge | Maximum Distance Between the Holes - Width | Maximum Distance Between the Holes - Length |
|--------------------|---------------------------------------|--|---|
| 6mm                | 10-20mm                               | 450mm                                      | 550   |



Panels can be in CONVEX or CONCAVE shape

### Fixing Details (with Rivets)

- Block Panel and Plastered Wall
- Fix aluminium section on wall, estimation gap of 400-700mm, center-to-center with help of deal vertically
- Pilot hole must be drilled before fastening rivets light
- Size of rivets must be three times the thickness of panel and gauge of aluminium; ensure rivets used are fully threaded



Panels can be bent on 90° angle

### Fixing Details (without Rivets)

- Slightly rub off the surface of aluminium section and portion of panels with the help of sandpaper before applying adhesive on it
- Don't use any silicon in the gap filling
- Maintain a gap of 3mm-6mm in between the planks